

LISTEN.
THINK.
SOLVE.®

Summer Days 2015

Tomas Babka
FBLA&S
September 2015



PUBLIC

Agenda

Connected Enterprise

Novinky pro rok 2016

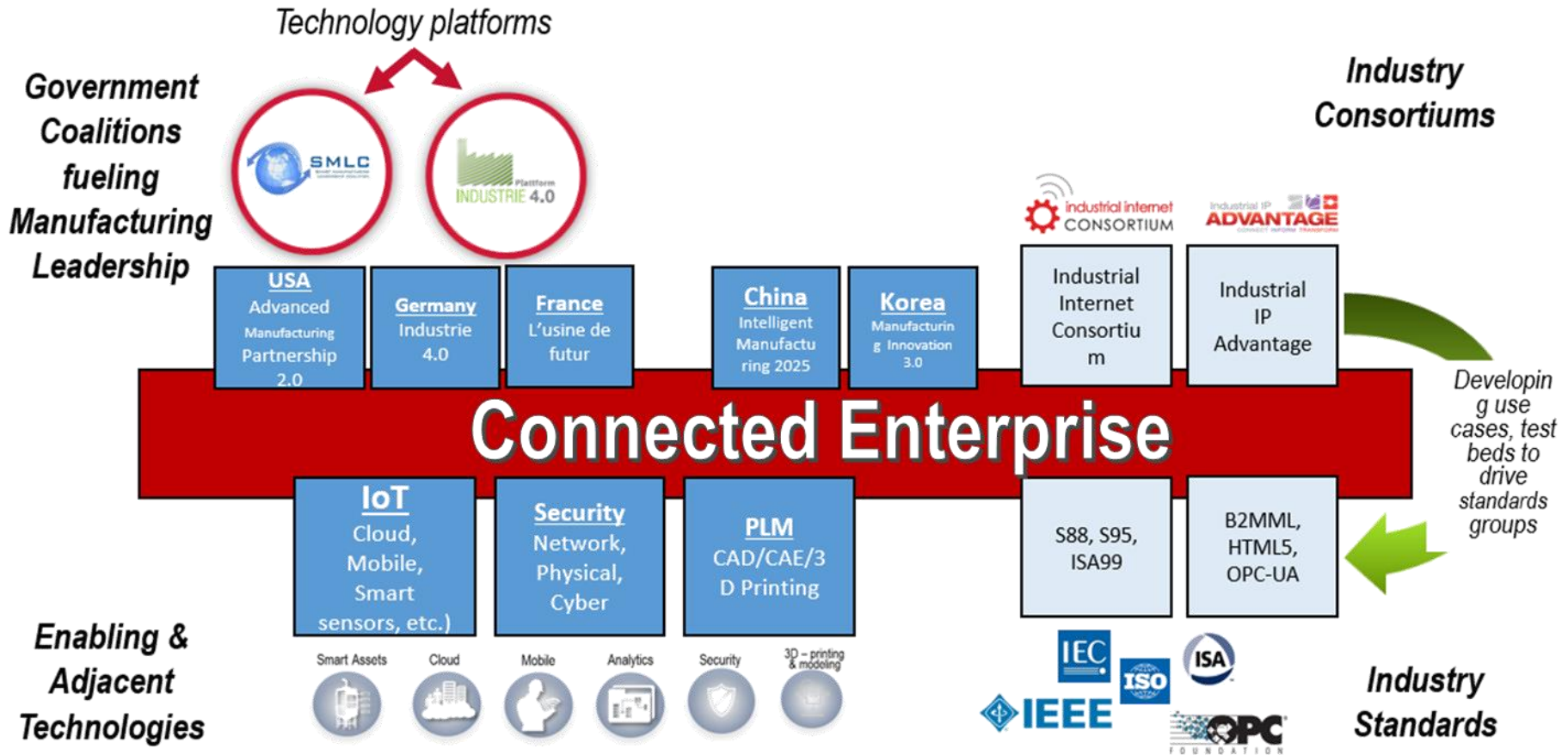
Program



The Connected Enterprise

Supporting Smart Manufacturing Initiatives

**Rockwell
Automation**





The Connected Enterprise

Accelerating Industrial Performance

**Rockwell
Automation**

Rockwell Automation *at A GLANCE*

22,000
EMPLOYEES



80+
COUNTRIES



\$6.62B
Fiscal 2014 Sales

*Leading global provider of industrial **power, control and information solutions***



20+ 
INDUSTRIES

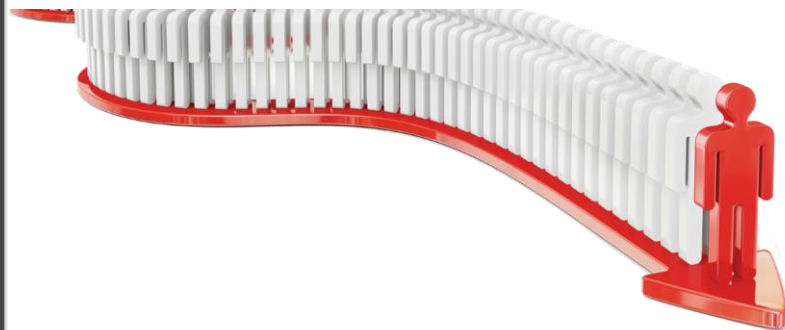
Serving Customers for 111 Years

- Technology innovation
- Domain expertise
- Culture of integrity & corporate responsibility



2014 **WORLD'S MOST ETHICAL COMPANIES™**
WWW.ETHISPHERE.COM





By 2020

1 billion new middle class consumers will add \$8T to consumer spending

Increased Demand on Industrial Production

GLOBAL POPULATION TRENDS
INCREASE DEMAND FOR

 **Manufacturing**

 **Resources**

 **Infrastructure**

Source: McKinsey

EMERGING MARKET CONSUMERISM

30%
More Water 

80%

More Steel 

100%
More Vehicles 

50%

More Energy 

RESOURCE PRODUCTIVITY
INVESTMENT

\$1T

Annually

Value at Stake for Manufacturing

Manufacturing \$3.9T



Asset Utilization

Employee Productivity

Supply Chain Logistics

Customer Experience

Innovation

SOURCE: CISCO

Smart Manufacturing

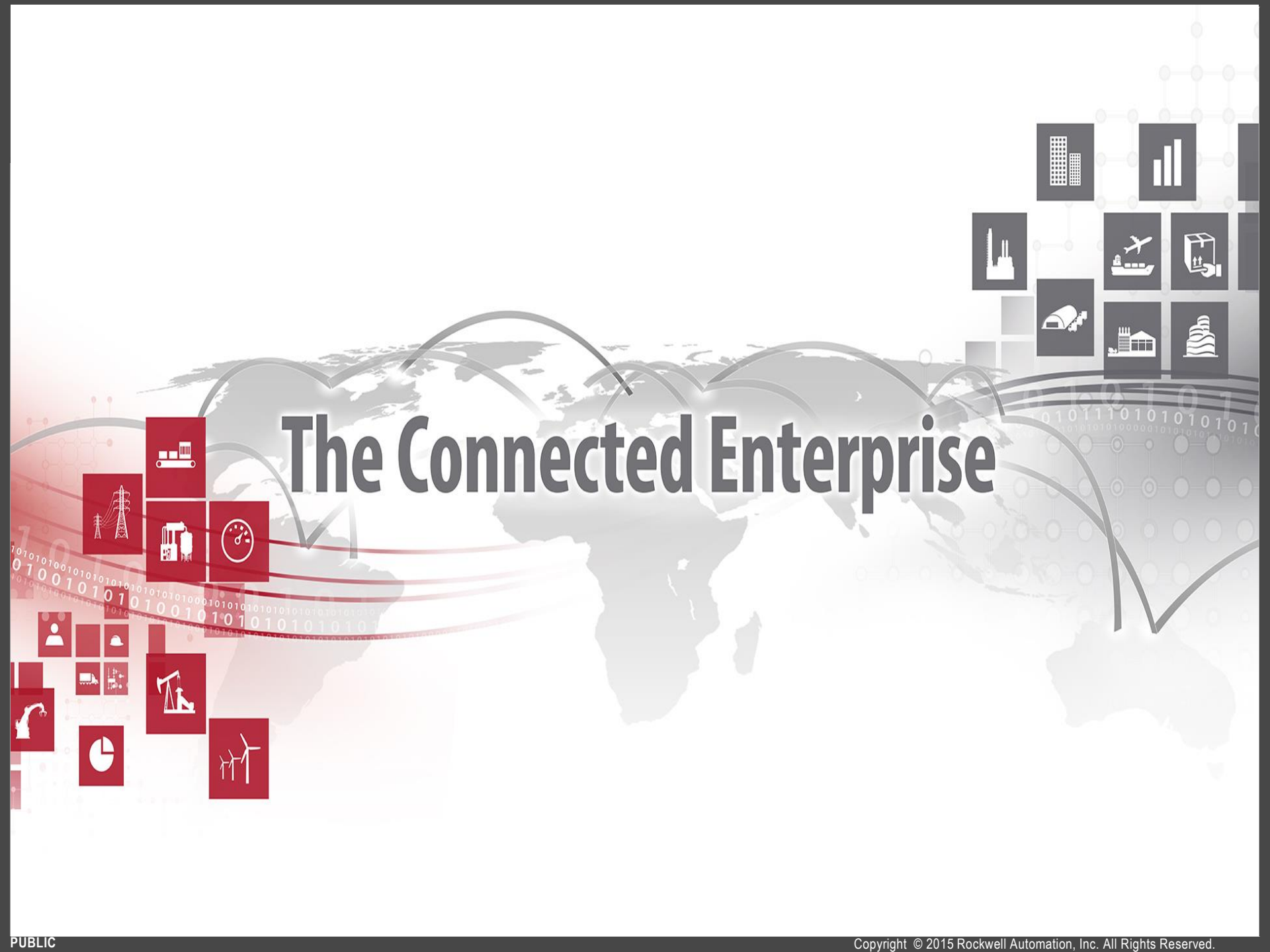
Smart Manufacturing is a *highly connected, knowledge-enabled* industrial enterprise where all business and operating actions are *optimized* to achieve substantially enhanced productivity, sustainability and economic performance

- Rockwell Automation is a founding member of the Smart Manufacturing Leadership Coalition (partial list of members)



Smart Manufacturing is delivered through The Connected Enterprise

The Connected Enterprise



The Connected Enterprise

Business Drivers

<14 %

of US manufacturers have tied their machines to the enterprise network



SOURCE: Industry Week

21%

of manufacturers have suffered a loss of IP in the past year



SOURCE: Kaspersky (2014)

2 Exabytes

of big data generated by manufacturing – more than any other sector



SOURCE: McKinsey

\$20B

cost of unscheduled downtime



SOURCE: ARC

Nearly 3/4

of U.S. plants are more than 20 years old

SOURCE: Industry Week

\$65B

The global installed base of legacy automation systems reaching the end of their useful life

SOURCE: ARC

Realizing The Connected Enterprise has become a business imperative

Transactional data: orders, supply network, product design ...

ERP FINANCIALS HR LOGISTICS QUALITY CRM ...

IT



CONVERGENCE

**Rockwell
Automation**

OT

Real-time data: control, safety, security ...

SENSORS,
ACTUATORS

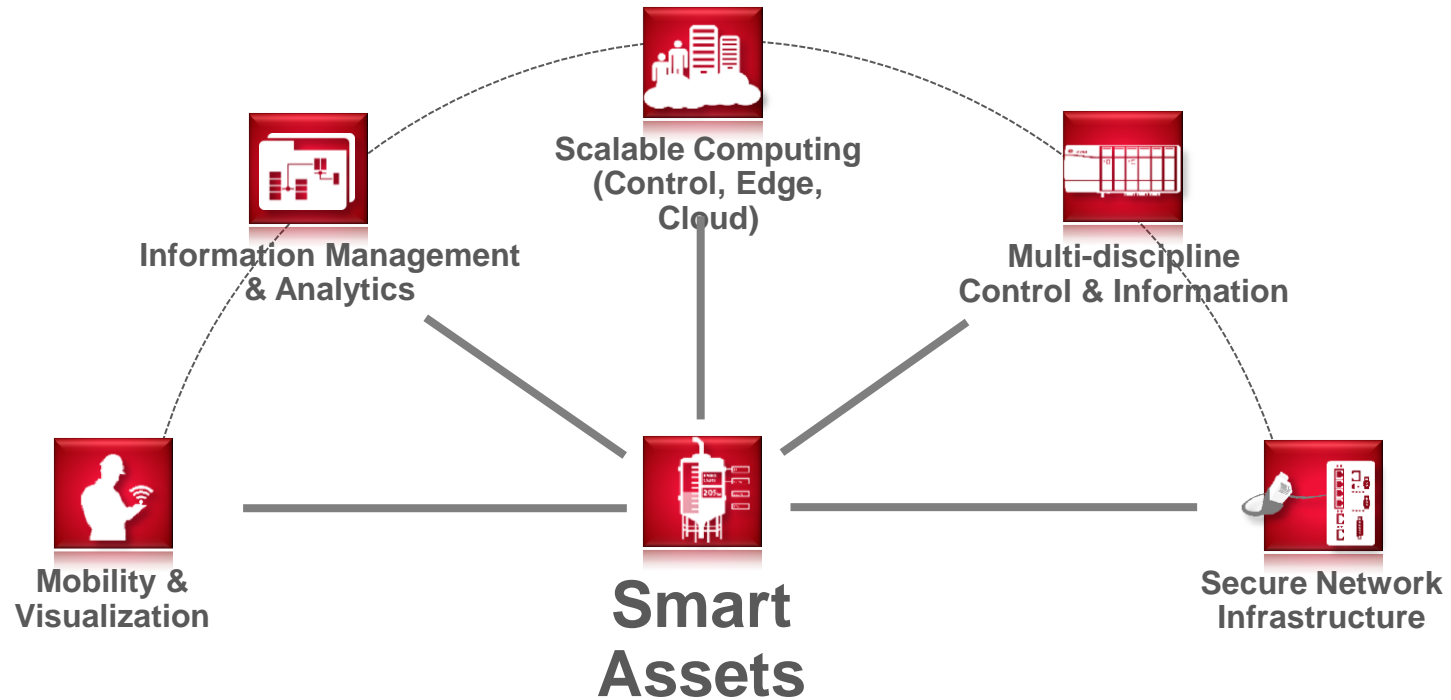
CONTROLLER
S

MATERIALS
&
TRANSPORT

MACHINES &
EQUIPMENT

...

The Connected Enterprise ...



... is enabled by Integrated Control and Information

Connected Enterprise

- The Industrial IoT at work for Industrial Applications



Contextualizing and analyzing data

Smart devices create more 'things' to be analyzed



Reliability, support, and disaster recovery

Shift from CapEx to **Flexible & Scalable** OpEx

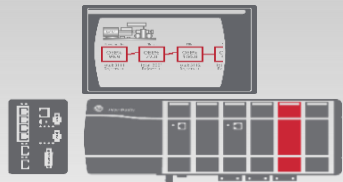


Access to actionable information

Workforce is **Mobile** during typical work day

Integrated Control and Information

Our Core Platforms Deliver The Connected Enterprise



Integrated Architecture

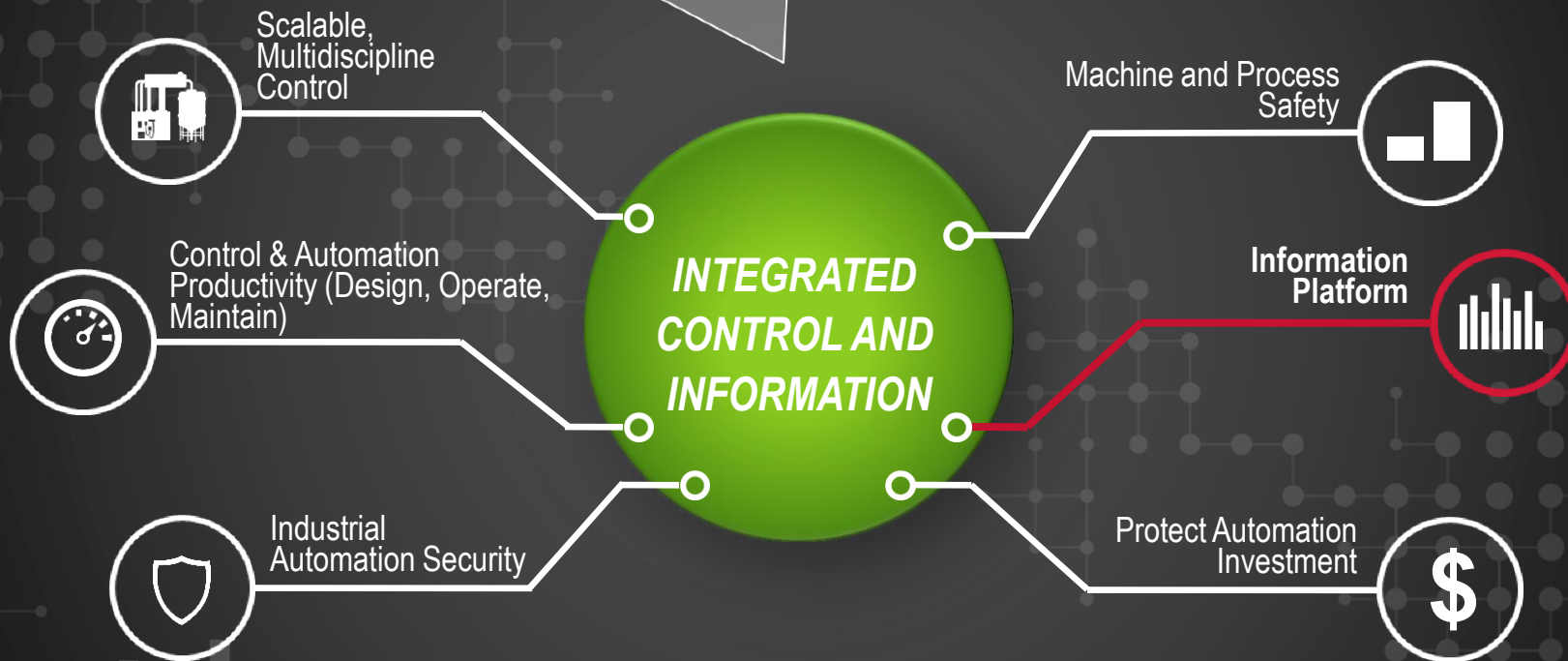


Intelligent Motor Control



Solutions & Services

Smarter. More Productive. More Secure.



CONSULTING & IMPLEMENTATION SERVICES

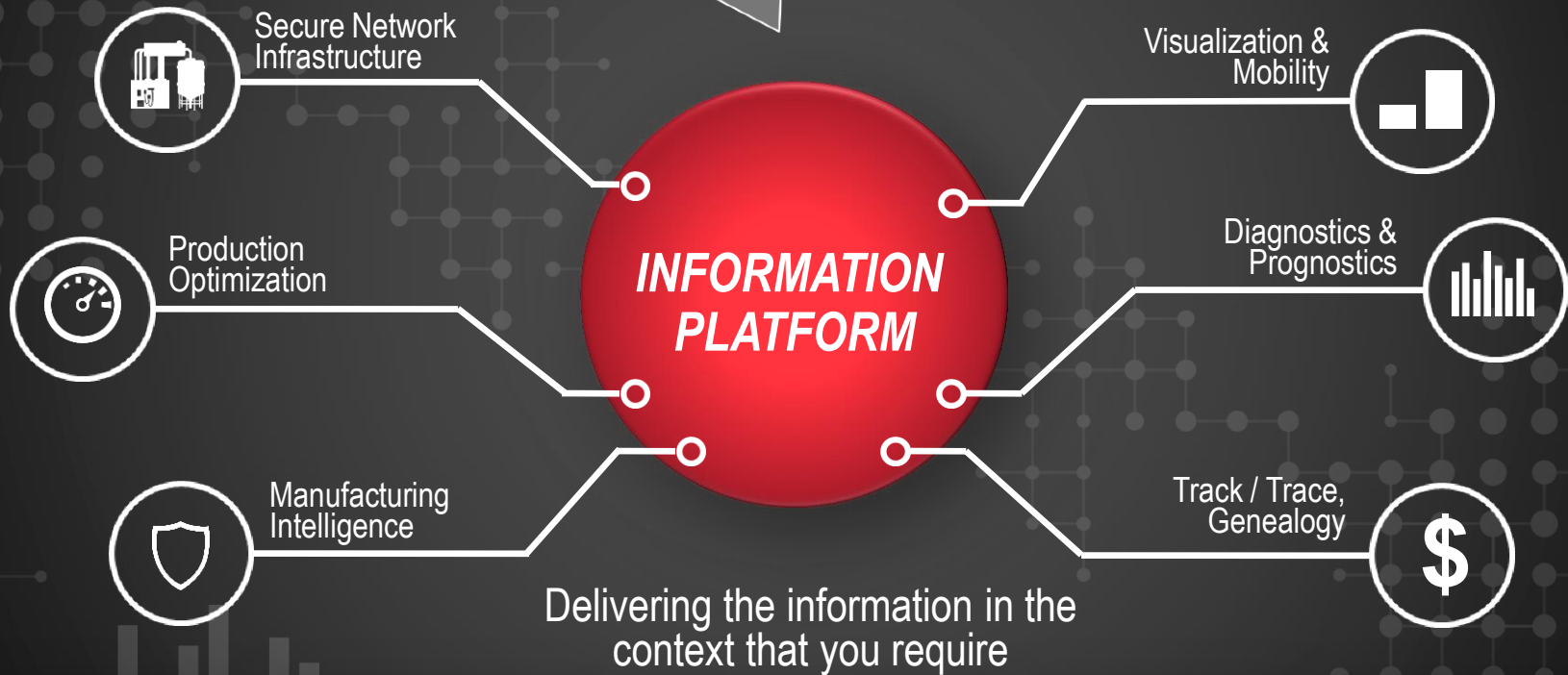
INTELLIGENT MOTOR CONTROL

INTEGRATED ARCHITECTURE

INFORMATION & VISUALIZATION SOFTWARE

MAINTENANCE & SUPPORT

Smarter. More Productive. More Secure.



SECURITY

ENERGY MANAGEMENT

OPERATIONAL EFFECTIVENESS

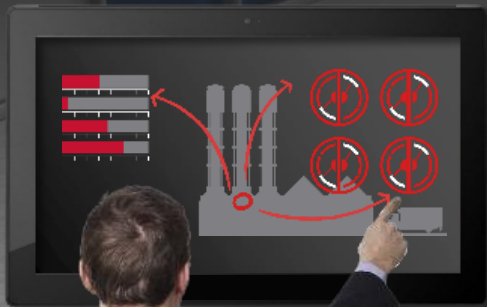
QUALITY

REMOTE SERVICES & SUPPORT

Relevant Information

Configured to your business needs...

Enterprise
Executive



Plant
Production
Management



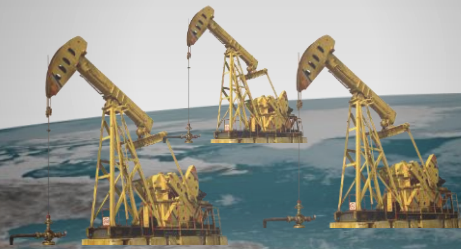
Equipment / Line
Plant Floor Operator



THE CONNECTED ENTERPRISE

Enabled by Integrated Control & Information

Smart Assets in the Field



Plant-wide Smart Assets



Distributed Smart Assets in the Field

Remote Asset Performance Management

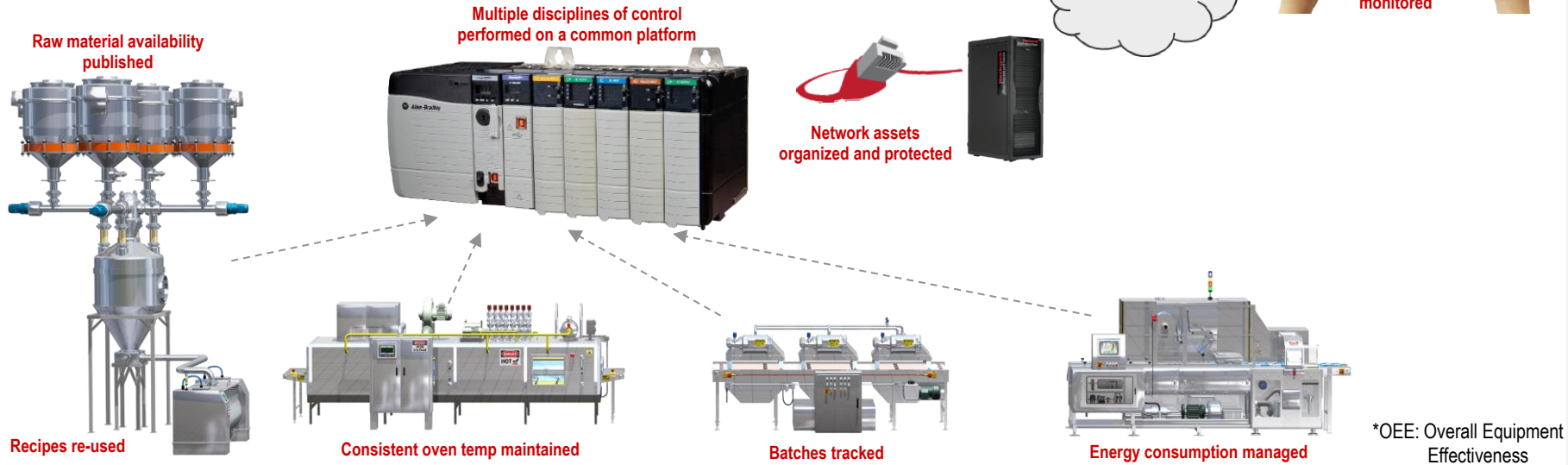


Production Optimization

Line Integration, Multi-Plant Performance Management

Benefits

- Logix and new software tools for faster line integration
- Industrial data centers and remote monitoring for lower total cost of ownership
- Enterprise-wide optimization and OEE* dashboards to increase asset utilization
- Globally consistent safety and network services to reduce risk



LISTEN.

The Connected Enterprise Implementation & Transformation

**Rockwell
Automation**



**387,000
SKUs**



 **20
PLANTS**

**UP TO
200 SKUs
PER ORDER**

**20 YEARS
AVG PRODUCT LIFE**

PRODUCT TYPES
• *Stock + Configure to Order*
• *Engineered to Order*

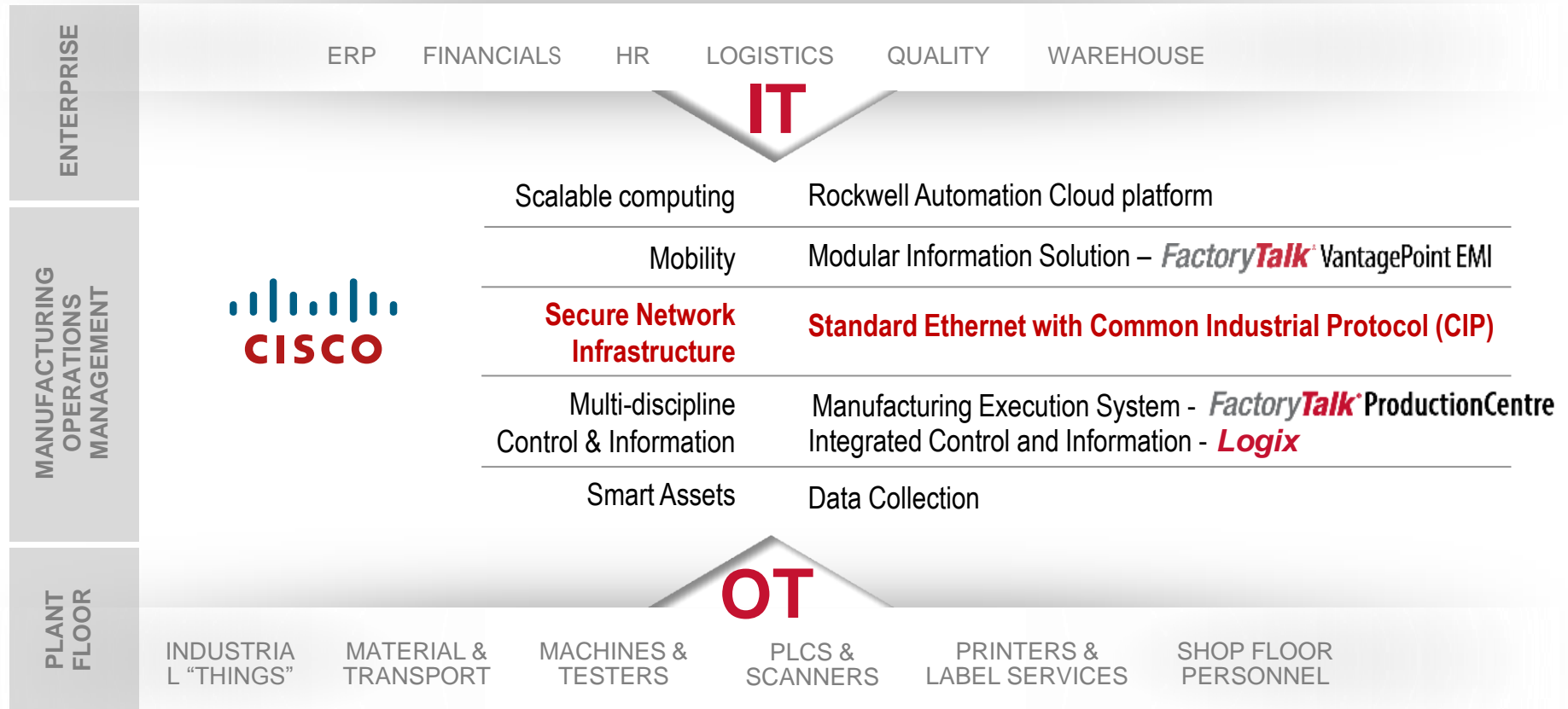
Copyright © 2014 Rockwell Automation, Inc. All Rights Reserved. 18

 **Allen-Bradley** • Rockwell Software

**Rockwell
Automation**

The Connected Enterprise

Implementation at Rockwell Automation



The Connected Enterprise

Rockwell Automation Transformation

LOWER COST PLANT BEHAVIOR

Inventory
120 days to 82 days

CapEx
30% per year in
capital avoidance

FASTER TIME TO MARKET SUPPLY CHAIN / LEAD TIMES

Delivery
Mid-80s to 96%

Lead Times
Reduced 50%

ENTERPRISE RISK CUSTOMER SERVICE

Time to Want
82% to 98%

Quality
50% reduction in PPM

Productivity ► 4% to 5% per year



The Connected Enterprise **CHALLENGES**

Organizational Alignment

Competency, Talent

Technology Adoption

Data Security, Privacy

Interoperability Standards

The Connected Enterprise
EXECUTION

Assessment

Secure, Upgrade Infrastructure

Working Data Capital

Analytics

Optimize & Collaborate

Collaboration Is Key To Realizing The Connected Enterprise



IT



**COMMON SECURE
NETWORK INFRASTRUCTURE**

**Rockwell
Automation**

OT



*Standards,
Academia, Industry
Initiatives*





THE CONNECTED ENTERPRISE

delivers transformational value in *productivity and global competitiveness*



Faster Time to Market



Lower Total Cost of Ownership



Improved Asset Utilization



Enterprise Risk Management

LISTEN.
THINK.
SOLVE.®

THE CONNECTED ENTERPRISE

www.rockwellautomation.com/connectedenterprise



Follow ROKAutomation on Facebook & Twitter.
Connect with us on LinkedIn.

www.rockwellautomation.com

 Allen-Bradley • Rockwell Software

**Rockwell
Automation**

Novinky pro rok 2016



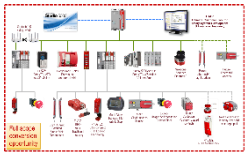
5580 ControlLogix

In FY16, 5580 represents the next generation of Logix controllers, delivering 5x to 20x performance increase over the prior generation with backward compatibility.



5380 CMX, 5069 Compact I/O

In FY16, the next generation Compact Logix and Compact I/O provide step-change performance increases for midrange applications with up to 16 motion axes.



Compact Integrated Safety

5370S Midrange Safety Portfolio

In FY16, the new Midrange Integrated Safety Portfolio delivers a complete safety solution from integrated safety controller to all connected & component safety devices.



PVP7 & MobileView

In FY16, PanelView Plus 7 family delivers a scalable platform of Performance & Standard HMI terminals, while MobileView delivers an integrated & mobile pendant solution

Novinky pro rok 2016



Kinetix 5000-Series

In FY16, the Kinetix-5000 Series platform offers world leading motion control capabilities through CIP Motion, Best-in-Class Small Size, and Power Range



iTRAK

Following from the FY15 launch of the iTRAK, FY16 continues the revolution of track-based technology solutions in the design and build of automation equipment



Intelligent Motor Control

In FY16, Integrated Architecture value is further expanded through power control with CIP-Motion & CIP-Safety in PowerFlex 527 and AOPs for E300 and SMC-50s

Program semináře RA Summer days 2015

Úterý 8.9. 2014

8:30 – 9:00	registrace
9:00 – 9:30	zahájení semináře, Automation & Software update
9:30 – 12:30	přednášky, Logix & Rockwell Software
12:30 – 13:30	oběd
13:30 – 16:30	přednášky, Pohony a Micro systémy & Bezpečnost
19:00 – 24:00	společná večeře

Středa 9.9. 2014

9:00 – 12:00	přednášky, Logix & Rockwell Software
12:00 – 13:00	oběd
13:00 – 16:00	přednášky, Pohony a Micro systémy & Bezpečnost
16:00 – 16:15	ukončení semináře

Program semináře

Místnost 1 - Allen	Místnost 2 - Bradley
<p>Logix a Netlinx</p> <ul style="list-style-type: none">- Logix – update a novinky- Studio 5000 v26- síť Ethernet/IP a jejich nastavení- CIP pakety a vysoká dostupnost sítí- IAB evaluace řešení	<p>Bezpečnost</p> <ul style="list-style-type: none">- analýza rizik- rozšíření analýzy rizik na posouzení rizik- přehled a novinky v produktech- výpočet SAB/SISTEMA- ES prohlášení o shodě
<p>Pohony a Micro systémy</p> <ul style="list-style-type: none">- novinky v pohonech 2015- měniče a jejich vliv na vyšší harmonické v síti- DMAT pomůcka pro programátory- systémy řady Micro 800 a CCW 8.0- Integrace E300 do FT EnergyMetrix	<p>Rockwell Software</p> <ul style="list-style-type: none">- Vizualizace- Softwary- Proces- Virtualizace

Cvičení (Labs) místnost

1. FactoryTalk View ME – pro pokročilé
2. FactoryTalk View SE – možnosti rozšíření a integrace s dalšími Rockwell SW
3. PlantPAx

Cvičení (Labs) místnost

1. CR 30 – programovatelné SFY

2. Komunikace CR 30 a CMX L18

3. Safezone

4 GuardLogix

Cvičení (Labs) místnost

1. E300 – elektronická motorová ochrana

2. PowerFlex 525 a 527

3. PowerFlex 755 – základní nastavení

4. PowerFlex 755 – polohovací funkce

LISTEN.
THINK.
SOLVE.®

Děkuji za pozornost



PUBLIC



Connect with us.

www.rockwellautomation.com



Allen-Bradley • Rockwell Software

**Rockwell
Automation**